

**This photo:** A broad stripe of patterned marble tile behind and beneath the soaking tub unifies bath elements and creates a pleasing waterfall-like effect. **Opposite:** “We loved that the chandelier looks like silver bracelets,” interior designer Leigh Nunnery says.





# *Gracefully* Adapted

Function and beauty  
comfortably coexist in  
a sophisticated bath  
designed just for her.

WRITER AND FIELD EDITOR LISA MOWRY  
PHOTOS ANTHONY-MASTERTSON





The layout of Sally and Ted Green's Atlanta home gives each of them a private bath, allowing for personalized designs that reflect each owner's style and needs. "My bathroom is certainly more feminine than his, and it gets a lot of bright light," Sally says. "But our house is 17 years old, so it was time for mine to get a remodel." Her challenge to bathroom designer Mary Kathryn Timoney: Make the space look dramatically different without moving any of the plumbing.

Timoney started by centering the bath's large picture window and adding a decorative transom to make the room seem more balanced. She also removed a dated tray ceiling and a sunken tub. She and interior designer Leigh Nunnery added sophistication to the room with a new custom vanity and a clean-lined tub. Decorative tile with a sinuous pattern ties everything together.

"We created a centerline with the mosaic tile," Timoney says. "It follows the back of the tub wall, the floor, and the vanity wall, with the tub and vanity centered on this stripe." To reinforce the feminine nature of the room, the designers also chose an elegant chandelier and added sheer drapery panels, both with patterns similar to the curves in the tile.


Functional choices are equally stylish—such as the sliding door of aqua-color glass that serves both the shower and the toilet compartment. "Since this bath is for one person, there is never a time that someone will be in the shower and the water closet at the same time, so Sally didn't need a door for each," Timoney says. "The glass door glides beautifully and eliminates the need for unsightly case openings."

The sliding door and the curbless shower provide another benefit, since Sally recently had to move to a wheelchair due to Parkinson's disease. "The bathroom isn't ADA-specific, but it functions well for a wheelchair," the homeowner says.

Sally's vision started with a clean slate, and the finished space is everything she wanted and more. "The decorative tile and sliding door are probably my two favorite things," she says. "But I love this bathroom more every day in many ways."

RESOURCES BEGIN ON PAGE 122.

**Opposite:** The dresserlike vanity and adjacent linen closet support the room's feminine vibe. Lucite knobs on the vanity drawers add a touch of glamour. **Above left:** The tub filler's gentle curve complements the shapely wall and floor tile. **Above:** Stainless-steel shelves behind the tub are equally functional and stylish.



“The glass door  
glides beautifully  
and eliminates the  
need for unsightly  
case openings.”

**Mary Kathryn Timoney**  
bath designer



**DESIGNER INSIGHTS**

## Getting White Right

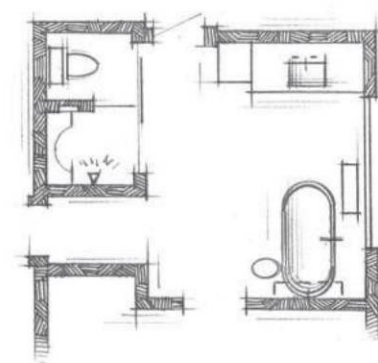
Everyone loves a crisp white bathroom, but no one wants it to look too stark. Designer Mary Kathryn Timoney shares her tips for softening the look:

- **Add dimension.** This bath's tile stripe adds a layer of interest. For the vanity color, Timoney chose a pale gray, which still "reads" as white but provides some contrast with the white marble countertop.
- **Include display space.** Open shelves, such as the stainless-steel pair behind the tub, offer the opportunity to add color with easy-to-change accessories.
- **Infuse subtle color.** The translucent sliding door that serves the shower and toilet compartment brings a pop of color—and some contemporary flair—without overwhelming the overall design.

 **Elegant Baths**

Take your bath from so-so to sophisticated with a well-planned remodel. This video explains how to score a high-end look. [BHG.com/Luxe](http://BHG.com/Luxe)

**Opposite:** A sliding glass door offers privacy in either the shower or the toilet area—a perfect solution for a bath with only one user. The light-aqua color of the glass also helps break up all the white in the room. **Above left:** A bench and a handheld spray make a shower more versatile for anyone—but they're particularly helpful for this homeowner, who uses a wheelchair. **Above:** A translucent grab bar adds chic functionality.





## HIGHER LEARNING PAGES 104–109

**Bath design:** Matthew Quinn, Design Galleria Kitchen & Bath Studio, 351 Peachtree Hills Ave., Suite 234, Atlanta, GA 30305; 404/261-0111; [designgalleria.net](http://designgalleria.net).

**Cabinetry with custom color lacquer—**Downsview Kitchens; 905/677-9354; [downsviewkitchens.com](http://downsviewkitchens.com). **Tub and sink basin** Intarcia in Raven from the Matthew Quinn collection—MTI Baths; [mtibaths.com](http://mtibaths.com). **Vanity top** Pebble, honed—CaesarStone US; 877/978-2789; [caesarstoneus.com](http://caesarstoneus.com).

**Tub and sink basin faucets, other accessories** from the Matthew Quinn collection—The Rubinet Faucet Co.; 800/461-5901; [rubinet.com](http://rubinet.com). **Shower door glass—**Smyrna Custom Glass and Mirror, Smyrna, Georgia; 770/436-4342. **Tile—**Renaissance Tile & Bath, Inc.; 800/275-1822; [renaissancetileandbath.com](http://renaissancetileandbath.com).

**Sconces—**George Kovacs Lighting, a division of the Minka Group; 800/221-7977; [minkagroup.net](http://minkagroup.net).



## GRACEFULLY ADAPTED PAGES 110–115

**Bath designer:** Mary Kathryn Timoney, Design Galleria Kitchen & Bath Studio, 351 Peachtree Hills Ave., Suite 234, Atlanta, GA 30305; 404/261-0111; [designgalleria.net](http://designgalleria.net).

**Interior designer:** Leigh Nunnery, John Kilmer Fine Interiors, 890 William Hilton Pkwy., Suite 41, Hilton Head Island, SC 29928; 843/785-2227; [johnkilmer.com](http://johnkilmer.com).

**Contractor:** Tom Williams Residential, Inc., 227 Sandy Springs Place, Suite D, Atlanta, GA 30328; 404/869-0333; [tom@tomwilliamsresidential.com](mailto:tom@tomwilliamsresidential.com); [tomwilliamsresidential.com](http://tomwilliamsresidential.com).

**Cabinetry—**Downsview Kitchens; 905/677-9354; [downsviewkitchens.com](http://downsviewkitchens.com). **Cabinet hardware—**Matthew Quinn collection, Atlanta; 404/974-3560; [matthewquinncollection.com](http://matthewquinncollection.com). **Tub—**BainUltra; 800/463-2187; [bainultra.com](http://bainultra.com).

**Floor and wall tile, sink and shower fixtures—**Renaissance Tile & Bath, Inc.; 800/275-1822; [renaissancetileandbath.com](http://renaissancetileandbath.com). **Sink faucet** Empire Royal—Joerger; [joerger.de](http://joerger.de). **Mirror—**Robern, Inc.; 800/877-2376; [robern.com](http://robern.com). **Shower door** Kinetic—Advanced Glass Designs, Roswell, Georgia; 770/475-8433; [advglassdesigns.com](http://advglassdesigns.com).

**Chandelier—**Masterpiece Lighting and Architectural Hardware, Atlanta; 404/897-9977; [masterpiecelighting.com](http://masterpiecelighting.com). **Drapery panels—**Ravan, Inc., Atlanta; 404/231-3929; [ravaninc.com](http://ravaninc.com).



## LOW COUNTRY LUXE PAGES 116–121

**Architect:** Christopher Rose, AIA, ASID Christopher Rose Architects, P.A., 3059 Meeks Farm Rd., Johns Island, SC 29455877/559-7670; [christopherrosearchitects.com](http://christopherrosearchitects.com).

**Cabinetry, cabinet hardware** polished nickel—Strimpfel Cabinets & Remodeling, LLC, North Charleston, South Carolina; 843/364-1581; [kscabinets.com](http://kscabinets.com). **Wall paint** Cream 44—Farrow & Ball; 888/511-1121; [farrow-ball.com](http://farrow-ball.com). **Flooring, wall, and shower tile** Jerusalem Gold travertine, **tile wall border** Honey Onyx and Jerusalem Gold basket weave, **backsplash tile** Honey Onyx in herringbone pattern with pencil tile in Jerusalem Gold—contact local cut stone retailers. **Sinks—**Toto USA, Inc.; 800/350-8686; [totousa.com](http://totousa.com). **Tub—**Kohler Co.; 800/456-4537; [us.kohler.com](http://us.kohler.com). **Sink and tub faucets—**Rohl; 800/777-9762; [rohlhome.com](http://rohlhome.com). **Sconces—**Visual Comfort & Co.; 866/344-3875; [visualcomfortlightinglights.com](http://visualcomfortlightinglights.com). **Mullioned oval windows—**Loewen Windows; 800/563-9367; [loewen.com](http://loewen.com). **Mirror over sink vanity** custom design—Christopher Rose Architects, P.A., Johns Island, South Carolina; 877/559-7670; [christopherrosearchitects.com](http://christopherrosearchitects.com). **Lead fasteners for window** custom—Justin Walling, Charleston Architectural Glass Studio, Inc., Charleston, South Carolina; 843/452-0427; [houzz.com](http://houzz.com), search: Charleston Architectural Glass Studio, Inc. **Shower wall and door** polished tempered glass created with Hydroschild, **shower hardware—**Palmetto Glass, Charleston, South Carolina; 843/556-0314. **Plantation shutters—**Window Master, Charleston, South Carolina; 843/552-1146.